



November 3, 2011

Dear WLP Friend,

Yes, it is that time a year again! Time to start checking off all those items on your holiday shopping lists for your loved ones *and* for those in need. We are giving you a rundown on all of the upcoming shopping events you can attend. Also, Gifts for Guests program is back again this year and *new* holiday inserts are available! Read on so you don't miss out on how you can support WLP *plus* an inside scoop on savings and deals!

Tea'rrific Event at the Oak Room

Stop by the legendary Oak Room at the Fairmont Copley Plaza Hotel on Saturday, November 12th. The Oak Room bar will be serving various tea-infused cocktails starting after lunch and well into the evening. Teas from all around the world, including organic-certified teas, will be used to create tongue-pleasing drinks. A portion of the proceeds from these *tea'rrific* drinks will help support the Women's Lunch Place.

'gift' a holiday shopping event at the Shops at the Pru



This year marks the 4th year of *gift*! *gift* is a holiday shopping event where supporters of local Boston non-profits can enjoy discounts at the Prudential Center on two evenings in November by purchasing a ticket from organizations like the Women's Lunch Place.

When: Thursday November 17 & Friday November 18 from 4:00 p.m. to 9:00 p.m. at the Shops at Prudential Center.

Check out this year's deals and discounts [here!](#) Tickets are \$5 and 100% of ticket proceeds will go to WLP! We will send you an email with an e-ticket to present at the Pru in order to redeem your wristband good for **both** evenings.

To purchase tickets, please email Cassie at cassie@womenslunchplace.org or call our office at (617) 267-1722.

You do the shopping and we will do the wrapping!

On **Monday November 28th and Wednesday December 21st**, WLP volunteers will be wrapping gifts outside of Barnes and Noble located inside the Shops at Prudential Center (straight up the stairs from the Cheesecake Factory). No matter where you purchased your gifts, we will wrap them for you! Monetary donations accepted and all go to the Women's Lunch Place.



Gifts Cards for Guests

Every year WLP Guests sign up for our **Gifts Cards for Guests Program**. Thanks to our generous supporters, right before Christmas we give our ladies a **\$25 gift card to their store of choice: Marshalls, Target, CVS, Stop&Shop, Shaws, or Walgreens**. We are asking for your help again this year to donate gift cards in the amount of \$25 to any of the mentioned stores above so that our guests can shop for their children for the holidays and/or purchase the daily staples that so many of us take for granted. Please send the gift cards to **The Women's Lunch Place, P.O. Box 170900 Boston, MA 02117, attention Development**. *If you are*

unable to shop, but would like to contribute to the program, you can mail your donation and we will do the shopping for you. The holidays are never an easy time for many and we want to make sure our Guests receive some much needed joy!

Holiday Inserts

Why not send an "in lieu of gift" to your friends and family this year? Snowflake decorated flat cards (approximately 4.25" x 3.75" card stock) are this year's holiday inserts! Include one in your annual holiday greeting card, or attach it to the outside of a gift. They are sure to warm the heart of the recipient while providing a hot meal to our Guests.

Each insert is \$10 and bulk orders are available. Order yours and we will mail them to you same day! To order, please email Cassie cassie@womenslunchplace.org or call us at (617) 267-1722. You can also order them on our donation page [here](#) and select other/misc from the drop down menu as your donation reason. Be sure to write "holiday insert" in the comments box along with the quantity of inserts you would like us to send to you. If your mailing address is different from contact info you provided, please include that as well.



Happy Holidays!

A gift was made in your name to the Women's Lunch Place.

This contribution will provide a guest a hot meal this holiday season.



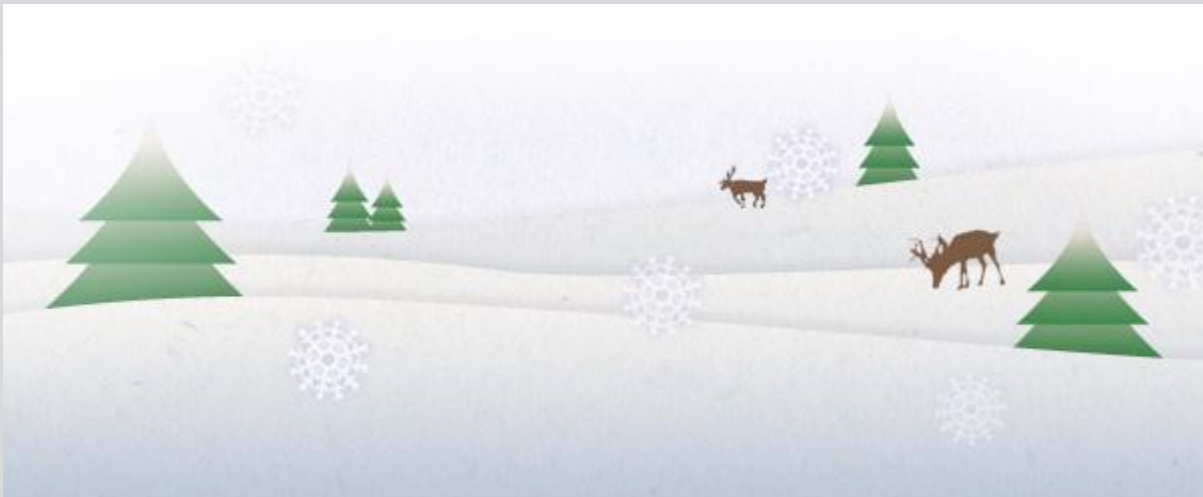
www.womenslunchplace.org

31 Nights of Light



On Monday, December 26th don't forget to look up as you walk the wintery streets of Boston!!! The top of the tower of the Shops at Prudential Center will be shining yellow in support of the Women's Lunch Place. Since 2009, 31 Nights of Light has brought awareness to different nonprofit organizations during the month of December.

Be sure to check our events page on our website [our facebook page](#) and [twitter](#) for updates!



Email Sponsored By:



[Forward email](#)

The Constant Contact Cares4Kids program supports non-profit organizations that work directly with children. Learn more about the [Cares4Kids](#) program, or [signup for a free 60-day trial](#).

This email was sent to cassie@womenslunchplace.org, by development@womenslunchplace.org
[Update Profile/Email Address](#) | Instant removal with [Safe Unsubscribe™](#) | [Privacy Policy](#).

The Women's Lunch Place | The Women's Lunch Place | 67 Newbury Street | Boston | MA | 02116